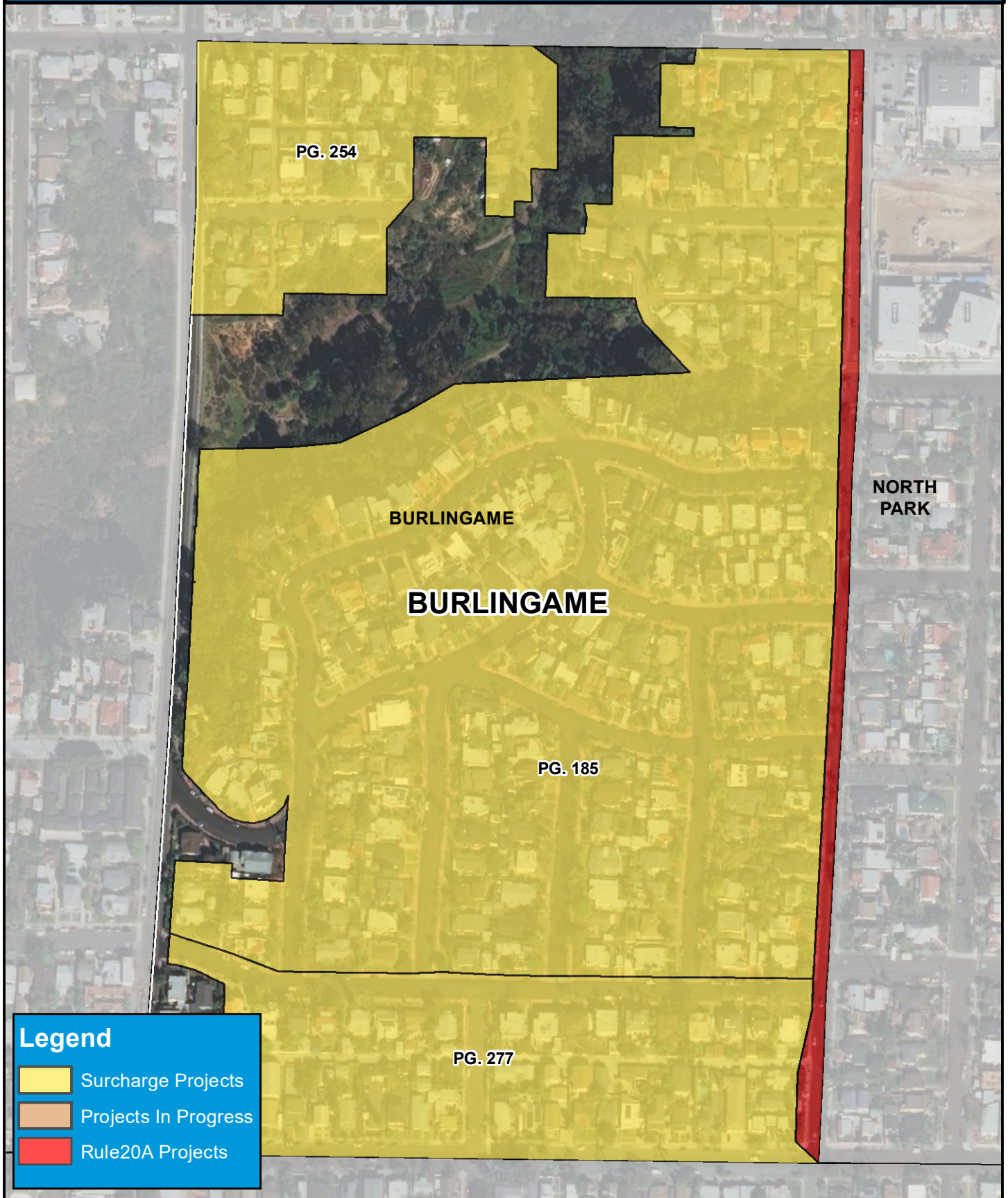
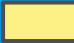






COUNCIL DISTRICT 3 NEIGHBORHOOD: BURLINGAME KEYED MAP

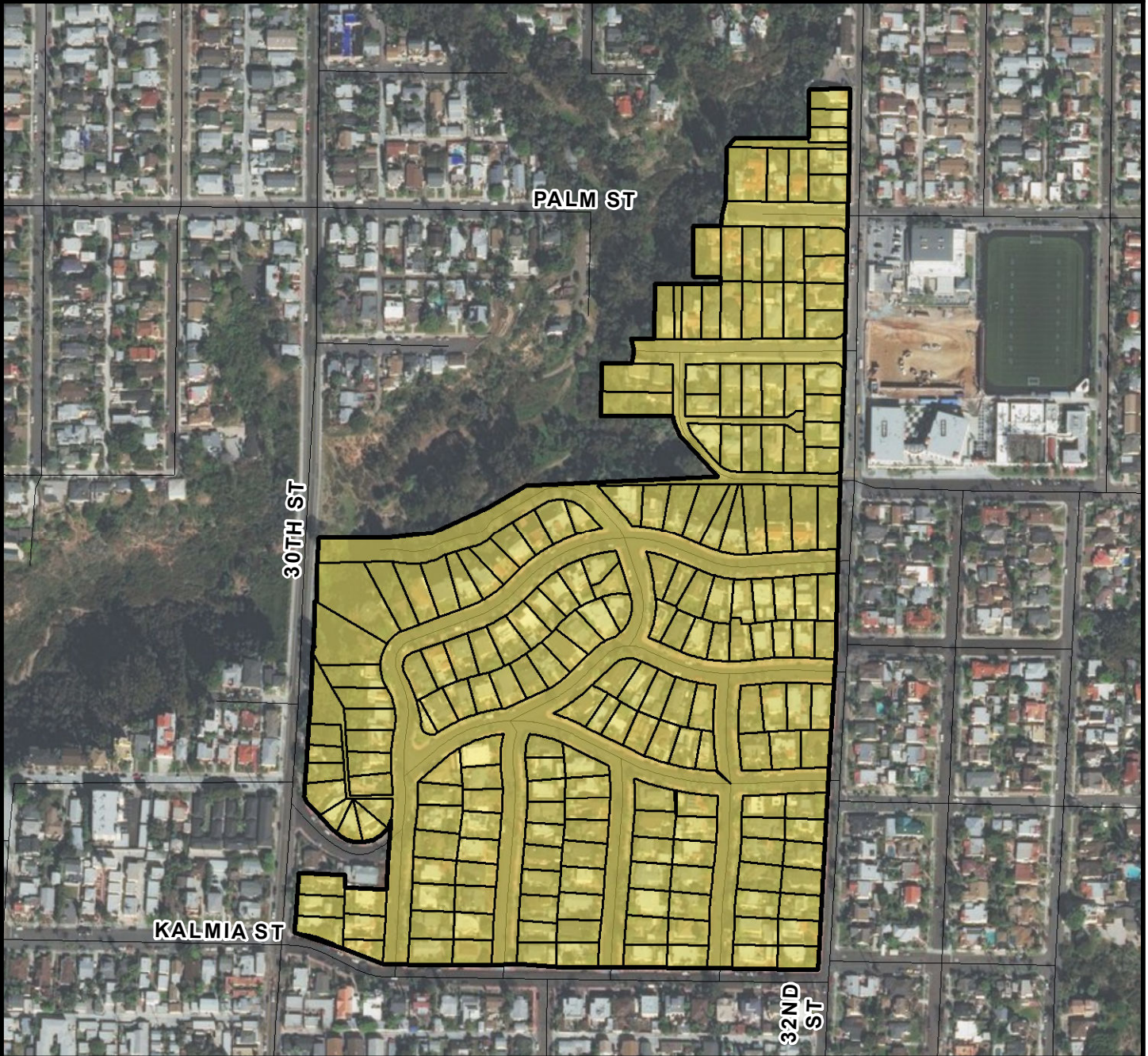


Legend

-  Surcharge Projects
-  Projects In Progress
-  Rule20A Projects



COUNCIL DISTRICT 3
NEIGHBORHOOD: BURLINGAME
PLANNING COMMUNITY: GREATER NORTH PARK



SURCHARGE PROJECT
BRGM-01: BURLINGAME 01

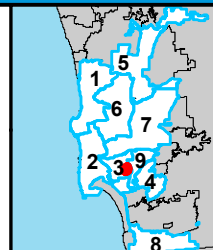
BOUNDARY LEGEND

- Project Boundary
- Parcel Boundaries



PROJECT DATA

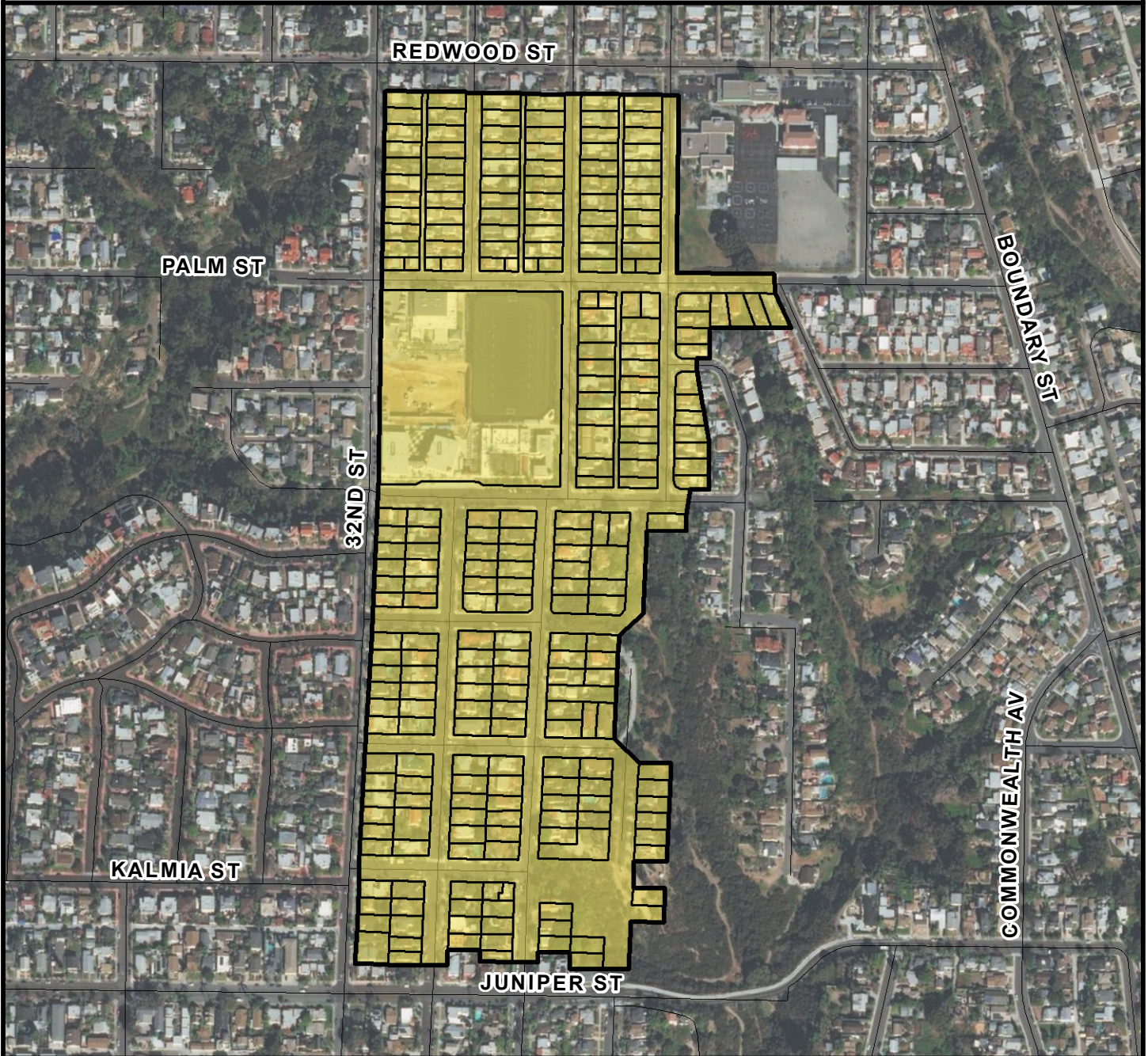
TRENCH LENGTH:	7,867 FT
SERVICE DROPS:	207
POWER POLE REMOVAL:	74
TRANSFORMER COUNT:	15
ESTIMATED COST:	\$ 6,617,996



SanGIS
 San Diego Gas & Electric
 THIS MAP/DATA IS PROVIDED WITHOUT WARRANTY OF ANY KIND, EITHER EXPRESSED OR IMPLIED, INCLUDING BUT NOT LIMITED TO, THE IMPLIED WARRANTIES OF MERCHANTABILITY AND FITNESS FOR A PARTICULAR PURPOSE.



COUNCIL DISTRICT 3
NEIGHBORHOOD: NORTH PARK
PLANNING COMMUNITY: GREATER NORTH PARK



SURCHARGE PROJECT
NOPK-27: NORTH PARK 27

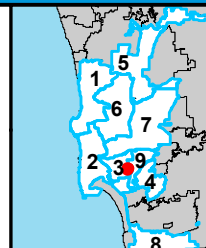
BOUNDARY LEGEND

- Project Boundary
- Parcel Boundaries



PROJECT DATA

TRENCH LENGTH:	10,205 FT
SERVICE DROPS:	245
POWER POLE REMOVAL:	97
TRANSFORMER COUNT:	21
ESTIMATED COST:	\$ 8,284,554



SanGIS
San Diego Geographic Information System
 THIS MAP/DATA IS PROVIDED WITHOUT WARRANTY OF ANY KIND, EITHER EXPRESSED OR IMPLIED, INCLUDING BUT NOT LIMITED TO, THE IMPLIED WARRANTIES OF MERCHANTABILITY AND FITNESS FOR A PARTICULAR PURPOSE.