



BURLINGAME NEWS

WE ARE NOW THE BURLINGAME NEIGHBORHOOD ASSOCIATION!!

At the Burlingame Homeowners Association Annual Meeting March 9, the BHA members overwhelming approved the name change to BURLINGAME NEIGHBORHOOD ASSOCIATION, as proposed by the Board. The BHA (BNA) Board will file the appropriate paperwork with the California Secretary of State's office for the change to be officially recorded in accordance with our California non-profit corporation (an 501(c)(4) 'Public Benefit Corporation' status. We thank the BHA members for making our name reflect what our community association has always been. Now there are no more excuses about "homeowners"! Want to join or know more—visit the *new* BNA website at www.burlingamesd.com, or send an email to inquire@burlingamesd.com.

***** **COMING to the NEIGHBORHOOD THIS MONTH** *****

EASTER EGG HUNT Saturday April 23

The Annual Burlingame Easter Egg Hunt will be Saturday April 23, directed by Teri Sullivan. The Burlingame Club will stuff plastic Easter Eggs and decorate **hard boiled** eggs at their monthly meeting **April 21**, at Jodi Mello's home, 2669 San Marcos, at 6:30. Bring 1-2 dozen hard boiled eggs to the meeting or drop them off at Jodi's if you can't attend the decorating party.



The Burlingame Club will also be **collecting for Rachel's House**, such things as new underclothes, socks, deodorant, hair supplies, sweaters, sweatsuits, slippers, blouses, as well as cash donations. **Everyone in the neighborhood** can contribute by dropping donations on Valerie Lake's porch (2526 San Marcos Ave) marked for Rachel's, **through the end of April**. **Many thanks!!**

Burlingame Annual Yard Sale Saturday April 30, 8 am -- Noon

Spring has sprung and time for that annual cleaning. BNA does its part to facilitate this chore by sponsoring the Burlingame Annual Yard Sale.

So if you are one of those folks who is striving to **GET ORGANIZED, REDUCE CLUTTER or TURN TRASH INTO CASH**, then please take note of the following. BNA places ads in the Reader, Spanish Reader, Craigslist and the Union Tribune inviting shoppers to our area. The ads will contain lists of wares that traditionally are available and will note that about 25 homes will participate. Large A-frame signs are placed on 30th and 32nd Streets at Redwood & Juniper to direct shoppers to us.

At noon all items that you do not want back in your home, can be delivered to an identified Burlingame address and these items will be donated to AmVets.



**BNA Monthly Meetings
at Mazaras**

April 13

May 11

June 8

BNA Board of Directors**Grant Merkel**

President

619-501-4483

grantmkl@hotmail.com**Ernie Smith**

Executive Secretary

619-282-9342

lentsmith@cox.net**Michael King**

Treasurer

619-787-6153

mwking@earthlink.net**Robbie DePerro**

619-269-0616

bigrobandlilanne@cox.net**Jim Velier**

Secretary

619-756-6205

Kathy Hodges

858-775-1516

khodges858@gmail.com**Robin Taylor**

619-358-9942

michael.robin.taylor@gmail.com**BURLINGAME CLUB**

April 21

May 19

No meetings until Sept. 15

Editor's note...

I have to say that I already feel better as a member of a Neighborhood Association rather than a homeowners association, even though the spirit of our organization was always that of neighbors coming together. Before we know it we will be celebrating our 100th birthday!

MORE ON BALBOA PARK: Last month I mentioned a proposal for making some changes in the central area of Balboa Park in preparation for 100th anniversary of the 1915 Panama-California Exposition. The proposal is for eliminating parking and traffic in the center of Balboa Park and restoring the Plaza de Panama and adjacent promenades to pedestrian spaces.

Since that introduction, many of you have attended a Burlingame Club meeting where Vickie Granowitz presented a brief review of Balboa Park planning, Master Plan, and the creation of a Balboa Park Conservancy. At that meeting SOHO (Save Our Heritage Organization) also presented their argument against the bypass bridge as proposed by the Plaza de Panama Committee.

Then on March 16, SOHO and the Plaza de Panama Committee made presentations to a meeting hosted by the BNA at Mazara's.

For those who continue to be interested in following the development of various proposals, there will be a panel and discussion sponsored by The League of Women Voters of San Diego:

BALBOA PARK: THE NEXT FOUR YEARS

Thursday, May 12, 9:30-12:30 pm

Recital Hall in BalboaPark (West Side of Palisades Parking Lot)

Reserve at 858-454-5019, 858-483-8696 or joandahlin@yahoo.com

SOHO's alternative proposal that can be read at sohosandiego.org/main/position.htm and the Plaza de Panama Committee information can be seen at www.balboapark.org/plaza-de-panama/Committee.

We are fortunate to be living so close to Balboa Park and this is an issue that interests our community, as it's almost in Burlingame's backyard. If you would like to express your opinion you can contact either of the organizations above via their websites or District Three Councilmember Todd Gloria's office (619) 236-6633 or toddgloria@sandiego.gov.

DON'T FORGET THE OLD HOUSE FAIR SATURDAY JUNE 18. Our home at 2403 San Marcos Ave. will be on their Home Tour. Volunteers and docents are needed for the Fair & Home Tour. Call 619.233.6679.

Ginny Sherwood, Editor

vjsherwood@yahoo.com

New BHA/BNA Board Elected

The Burlingame Homeowner's annual meeting was held March 9, at Mazara's Trattoria, our local neighborhood pizza joint. (We've all come to love Mazara's – maybe because the owners are incredibly friendly and remember your name after a visit or two, or maybe because the pizza and other dishes are great!) After dinner, Burlingame residents cast their ballots for two major decisions this year. First was the vote to change the name of the organization from “BHA” to “BNA”. Then the 2011 Board of Directors candidates were presented: Grant Merkel, our Board President in 2009-2010, was running to improve the community; Ernie Smith, a 32+ year resident, wanted to stay involved to keep the BNA going; Jim Velier kept his name in the hat because he's gotten the hang of it now and doesn't want to waste that knowledge; Michael King, our treasurer (who took over for Connie diGirolamo) wanted to continue to use all the skills and knowledge he'd obtained since taking over; Robbie DePerro wanted to stay on the Board (after being appointed when David McQuaide needed to focus on getting ready to move) to stay involved in the community and improve it; Robin Taylor wanted to continue to pursue the Switzer canyon improvement project she started and give back to the community; and Kathy Hodges was so grateful for the great welcome and help she and husband Peter Thomas received since purchasing their home, she wanted to give back. All those who ran were duly elected to the 2011 Board. The Burlingame residents at the meeting appeared very happy to have re-elected/elected a Board with a sense of commitment, community, continuity and purpose to carry on the work of the **Burlingame Neighborhood Association**.

SAVE THIS 2012 DATE !

Kick off the yearlong celebration of our Burlingame Centennial with the Anniversary Party scheduled for the afternoon of Saturday, January 14, 2012

On January 13, 1912 the 40-acre Burlingame Tract, newly minted along the 30th Street electric railway, was opened to the public. Dubbed “The Tract of Character” by developers McFadden & Buxton, thirty-four lots sold that very first weekend. The first home constructed (in less than 2 months) was the Erwin D. Norris home, at 3170 Maple.

Fast forward 100 years, and 3170 Maple is now the wonderfully restored home of Mike and Deb Morrison, and the location of our first centennial event – the Anniversary Party! Plan to celebrate our history with your neighbors and Burlingame alumni and prove that “The Tract of Character” still has wonderful character, 100 years later.

Kathy Garcia, Centennial Committee

IN THE MEANTIME...

BURLINGAME 2011 HAPPY HOURS

Apr 29th @ 3166 Laurel Street

May 27th (available) TBA

Jun 24th @ 3154 Laurel Street

Jul 29th @ 2460 32nd Street

Aug 26th @ 3048 Laurel Street

Sep 30th @ 3109 Laurel Street

Oct 28th (available) TBA

Dec 2nd @ 3170 Maple Street

If you can host May or October, contact Vance at 640-8262 or wvancewalker@gmail.com

Read *Burlingame News* at www.burlingamesd.com. In color, with web links!

Switzer Canyon Bridge Beautification and Traffic Calming Project

Switzer Canyon exists as a natural plant oasis located in the midst of our urban neighborhoods. In 1956, the original wood and steel bridge that spanned Switzer Canyon was destroyed by storms and was replaced by an earthen in-fill structure. In the 55 years since the repair, a thriving residential, business and shopping district has developed around the bridge. However, the Switzer Canyon Bridge remains an under-developed structure whose primary function is that of a high traffic causeway aimed at moving cars quickly and efficiently to points North and South. Given the growing popularity of the business districts flanking the canyon, the bridge sees increased numbers of pedestrians and cyclists utilizing the bridge to reach dining and shopping destinations. The lack of attention to aesthetic features of the bridge has led to a barren space that does not reflect the beauty of the canyon by which it is surrounded. Further, as many of us can attest, the bridge has become a dangerous place to drive, bicycle and walk. Wide traffic lanes, a higher speed limit across the bridge and the lack of traffic calming measures have had the unintended effect of encouraging motorists to travel at excessively high rates of speed. A group of BNA Board members and Burlingame neighbors has formed to develop a proposal that would provide street trees, urban art trees and bike lanes along the bridge. Our goal is to bring a proposal before the North Park Maintenance Assessment District (MAD) to seek assistance with implementation and funding of this project. We hope that these efforts will create a safer, calmer, and more appealing canyon bridge environment for everyone who utilizes the bridge. If you'd like to know more, contact the BNA at inquire@burlingamesd.com or call Robin at 619-358-9942.

~by Robin Taylor



Burlingame Tree Planting

The Burlingame Neighborhood Association will sponsor a parkway tree planting beginning this April. This will be our fourth event aimed at the greening of Burlingame through planting palms in the parkways. Over the years BNA has helped enhance our streets by adding nearly 100 trees. Once again we will plant the "dedicated tree" for our neighborhood, the King Palm (*archontophoenix cunninghamiana*).

The King Palm Tree is one of the most popular palms in tropical and subtropical climates. It is a sun-loving tree that is native to Australia. It grows to 25-40 feet and has moderate water requirements. San Diego city officials selected the King as our dedicated tree because of the long history of palms in our neighborhood, because it has a root ball that will not cause damage to the sidewalks, curbs or streets and because it is a self-cleaning palm. The self-cleaning aspect is important because this tree naturally sheds its fronds, does not require ongoing professional pruning, and will not be an added cost to city maintenance budgets.

Our plan is very simple.....

1. Gather names of neighbors who are interested in putting King Palms in their parkways.
2. Get the best "group purchase/volume buying" price on King Palms.
3. Have the trees planted professionally, either by the nursery or a third party organization.
4. Reap the benefits of a greener Burlingame.....with beautiful tree lined streets

Neighbors who are interested in purchasing palms should contact Ernest Smith at ernestsmith90@gmail.com or at 282-9342.

Read *Burlingame News* at www.burlingamesd.com. In color, with web links!

Congratulations to Pete & Connie diGirolamo for being selected as the Water Conservation Garden of the Month by Todd Gloria's Office!

Their yard at 2440 Pamo Ave. is cited as "a lush display of low-water plants, rocks and pavers and proves that a yard need not be bare or minimalist to look great and save water".

For other news from District Three see <http://www.sandiego.gov/citycouncil/cd3/pdf/newsletter11february.pdf>



Meet a Burlingame Neighbor - Ginny Alire @ 2639 San Marcos Avenue

In the Burlingame Historical District Draft 1996, this home is deemed historic. The architectural style is identified as Mission Revival. Further comments state: "1923 was the date of construction estimated from the field survey. Real estate dates based on the Assessor's information indicate that 1945 was the date of construction". Go figure!

My goal in crossing the street to visit with my neighbor, Ginny, was to learn more about her and her time in this house. She is originally from Brooklyn, NY and of Irish ancestry. She met her husband, Jose, at a party hosted by her best friend to welcome home soldiers who had served together in the Mediterranean. Jose was a dispersing clerk in the Navy. When the couple was transferred to San Diego they lived first in Point Loma, then North Park and finally Burlingame (1968). When I asked her why they chose Burlingame she said because many of their friends from the Knights of Columbus lived there. The church they would attend and the school they chose for their only child, daughter Marie, was St. Pat's on 30th Street.

Original oak floors, fireplace and window frames are part of Ginny's home. She is proud to have kept up her home including having double paned windows installed and new heating, electrical and plumbing systems put in. Even after the untimely death of her husband from a massive heart attack in 1978, Ginny said this was her home and she intended to stay put.

Over the years, the original 2 bedroom/one bath house has been added onto. Carpet protects the oak floors throughout and knotty pine cupboards have replaced the original ones. She's sure they'll come back in style. A family room, bathroom, den and laundry room, easily accessed from the kitchen, were added on. "Best of all," said Ginny as she proudly showed me her home, "It's all paid off".

She continued to work at Sears and Roebuck in Hillcrest after her husband died. In 1985, after 20 years, she retired from this job. Mission and Fashion Valley had opened and Sears as well as Penney's in North Park closed at this time. After 8 months of retirement she began a new job with an allergy and lung medical group. That lasted six and a half years. Ginny took 6 months off and began a career with the credit bureau that lasted 17 years. She retired from that job on June 4, 2010. Now, she says, that she's had enough retirement. She plans to volunteer at the Naval Hospital 4 days a week. She just wants Fridays and the weekends to herself.

I asked her to tell me about Burlingame - her life and that of her neighbors. She recalled who had lived where over the years and knows the current residents as well. She has been a member of the BHA since it first came to be in the 1980's. She appreciates the newsletters and flyers she receives and says they help her keep up with what's going on. "Burlingame is a wonderful and safe place to live. I've been happy here". After 42 years of living here we can take her at her word.

Interviewed January 2011 by Pat Taylor

Read *Burlingame News* at www.burlingamesd.com. In color, with web links!

Burlingame Neighborhood Association & Burlingame Club

2011 Calendar

April 2011

- 1st Spring Newsletter Distribution
- 13th BNA Board Meeting @ Mazaras
- 21st Burlingame Club Meeting
@ 2669 San Marcos Avenue
- 23rd Burlingame Club –
Easter Egg Hunt Switzer Canyon
- 30th BNA Annual Yard Sale

Type to enter text

May 2011

- 11th BNA Board Meeting @ Mazaras
- 19th Burlingame Club Meeting & Installation Dinner
@ 2416 Pamo Avenue

June 2011

- 8th BNA Board Meeting @ Mazaras
- 11th BNA – Dumpster Days

July 2011

- 1st Summer Newsletter Distribution
- 13th BNA Board Meeting @ Mazaras

August 2011

- 10th BNA Board Meeting @ Mazaras

September 2011

- 7th BNA Board Meeting @ Mazaras
- 10th BNA ANNUAL BLOCK PARTY
- 15th Burlingame Club Meeting – TBA

October 2011

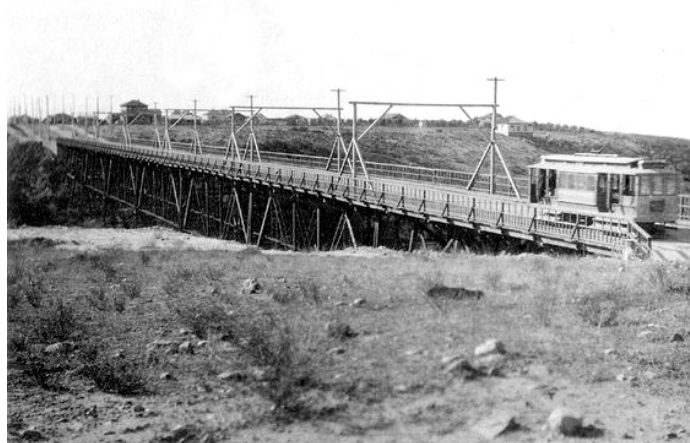
- 1st Fall Newsletter Distribution
- 12th BNA Board Meeting @ Mazaras
- 20th Burlingame Club Meeting – TBA

November 2011

- 9th BNA Board Meeting @ Mazaras
- 17th Burlingame Club Meeting – TBA

December 2011

- 14th BNA Board Meeting @ Mazaras
- 15th Burlingame Club Meeting &
Cookie Exchange – TBA
- 17th BNA Luminaries Assembly & Dist
- 18th BNA Holiday Party w/Luminaries



The original 30th Street bridge over [Switzer Canyon](#), circa 1908.

Front yard farming in Burlingame.

